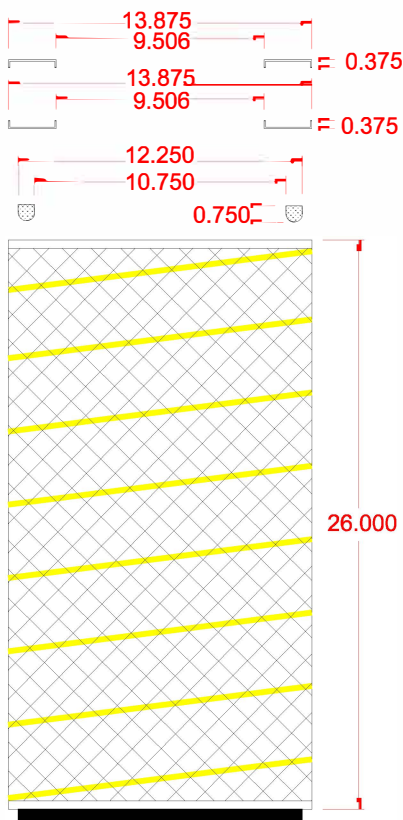


## ACSF-343-FL



### CONSTRUCTION:

ELECTROPLATED GALVANIZED OPEN END CAP  
 ELECTROPLATED GALVANIZED OPEN END CAP  
 G-90 GALVANIZED EXPANDED METAL OUTER BODY  
 G-90 GALVANIZED EXPANDED METAL INNER CORE  
 210 SQUARE FEET CELLULOSE FLAME RETARDANT MEDIA  
 EPDM RUBBER SEALING GASKET APPLIED TO ONE OPEN END CAP  
 PVC SEALANT APPLIED TO BOTH ENDS  
 HOT MELT ADHESIVE BEAD APPLIED OUTSIDE ONLY  
 PACKAGED ONE PER CARTON  
 WEIGHT: 16 POUNDS

### EFFICIENCY: (PER ASHRAE 52.1-1992)

TEST FLOW RATE: 500 CFM  
 INITIAL RESISTANCE: .59 INCHES W.G.  
 INITIAL DUST SPOT EFFICIENCY: 43.9%  
 DUST SPOT EFFICIENCY AT 1" W.G.: 98%  
 DUST SPOT EFFICIENCY AT 2" W.G.: 99%  
 DUST SPOT EFFICIENCY AT 4" W.G.: 100%  
 AVERAGE ATMOSPHERIC DUST SPOT EFFICIENCY: 97%  
 AVERAGE SYNTHETIC DUST WEIGHT ARRESTANCE: 100%  
 ASHRAE DUST HOLDING CAPACITY: 5900 GRAMS

### OPERATING EFFICIENCY:

99.9 @ .5 MICRON AND ABOVE

### MINIMUM EFFICIENCY REPORTING VALUE: (PER ASHRAE 52.2-1999)

MERV 10

### MEDIA TYPE:

A COMBINATION OF CELLULOSE FIBERS DESIGNED TO PROVIDE EXCELLENT EFFICIENCY AND CAPACITY IN A WIDE VARIETY OF APPLICATIONS.  
 THE FLAME RETARDANT ADDITIVE USED IS AN ANTIMONY TRIOXIDE.